



# PLAY GLOBAL

IT STARTS WITH A PLAYGROUND

**#PLAY #LEARN #GROW #FUN #SPEED #SAFETY**

**MULTI PURPOSE PLAY - SYSTEMS**



**MPPS - 01 ( Goa )**



**MPPS - 02 ( Vasai )**



**MPPS - 03 ( Virar )**



**MPPS - 04 ( Parbhani )**



**MPPS - 05 ( Ulwe )**

[www. playglobal.in](http://www.playglobal.in)



**MPPS - 06 ( Thane )**



**MPPS - 07 ( Boisar )**



**MPPS - 08 ( Bandra )**



**MPPS - 09 ( Malad )**



**MPPS - 10 ( Goregaon )**



**MPPS - 12 ( Igatpuri )**  
[www.playglobal.in](http://www.playglobal.in)



**MPPS - 13 ( Kharghar )**

**MULTI PURPOSE PLAY - SYSTEMS**

**MULTI PURPOSE PLAY - SYSTEMS**



**MPPS - 14 ( Thane )**



**MPPS - 15 ( Bhayander )**



**MPPS - 16 ( Nerul )**



**MPPS - 17 ( Wasind )**



**MPPS - 18 ( Mira Road )**

[www.playglobal.in](http://www.playglobal.in)



**MPPS - 19 ( Colaba )**



**MPPS - 11 ( Manor )**



**MPPS - 20 ( Baramati )**

**MULTI PURPOSE PLAY - SYSTEMS**



**MPPS - 21 ( Ulwe )**



**MPPS - 22 ( Marol )**



**MPPS - 23 ( Thane )**



**MPPS - 23 ( Thane )**



**MPPS - 24 ( Pedder Road )**  
[www. playglobal.in](http://www.playglobal.in)



**MPPS - 25 ( Dahisar )**



MPPS - 26 ( Thane )



MPPS - 26 ( Thane )



MPPS - 27 ( Karjat )



MPPS - 28 ( Ulwe )

[www. playglobal.in](http://www.playglobal.in)

MULTI PURPOSE PLAY - SYSTEMS

**SWINGS**



**SW - 01 ( Double Swing )**



**SW - 02 ( Four Seater Swing )**



**SW - 03 ( Double Swing )**



**SW - 04 ( Arm Swing )**



**SW - 06 ( Multi Seater Circular Swing )**





**SW - 07 ( Premium Swing )**



**SW - 11 ( Economy Swing )**



**SW - 10 ( Garden Swing )**

[www. playglobal.in](http://www.playglobal.in)

**SWINGS**

**SWINGS**



**SW - 08 ( Premium Luxury Swing )**



**SW - 15 ( Mini Swing )**



**SW - 14 ( Single Pole Swing )**



SL - 01 ( FRP Wave Slide )



SL - 03 ( FRP Straight Slide )



SL - 03 ( FRP Straight Roller Slide )



SL - 07 ( G.I Straight Slide )



SL - 09 ( FRP Spiral Slide )

**SLIDES**



**SL - 16**  
( FRP Double Straight Roller Slide )



**SL - 11**  
( FRP Open Slide )

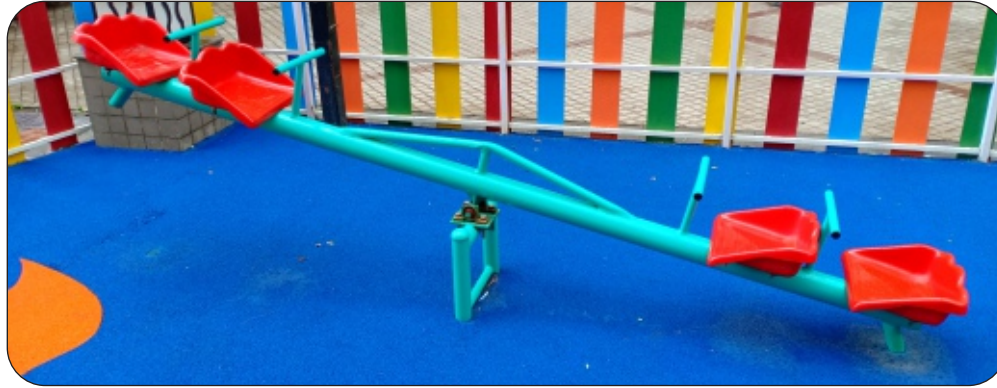
[www.playglobal.in](http://www.playglobal.in)



**SL - 15** ( FRP Triple Wave Slide )



**SL- 13**  
( Roto Kids Double Slide )



SS - 03 ( Multi Seater See - Saw )



SS - 02 ( Four Seater See - Saw )



SS - 06 ( Animal See - Saw )

[www.playglobal.in](http://www.playglobal.in)



SS - 07  
( Four Seater Spring See - Saw )

SEE - SAW

**SEE - SAW**



**SS - 01 ( Standard See - Saw )**



**SS - 04 ( Spring See - Saw )**



**SS - 09 ( Premium See - Saw )**

[www. playglobal.in](http://www.playglobal.in)



**MGR - 01 ( FRP Platform MGR )**



**MGR - 02 ( FRP Animal MGR )**



**MGR - 03 ( FRP Seating MGR )**



**MGR - 04 ( FRP Four Seater MGR )**



**MGR - 05 ( FRP Platform Animal MGR )**



**MGR - 06 ( Cup Spinner MGR )**

[www. playglobal.in](http://www.playglobal.in)

**MERRY - GO - ROUND**

**CLIMBERS**



**CLT- 01 ( Alphabet Climber )**



**CLT- 01 ( Mini Sun Climber )**



**CLT- 15 ( Obstacle Course 2 )**



**CLT- 02 ( Satellite Climber )**



**CLT- 14 ( Obstacle Course 1 )**





**CLT - 12 ( Multi Climber )**

[www.playglobal.in](http://www.playglobal.in)



**CLT - 04 ( Round Climber )**

**CLIMBERS**

# CLIMBERS



CLT - 08 ( S Bridge )



CLT - 10 ( Loop Rung )



CLT - 13 ( Rock Climber )



CLT - 07 ( Monkey Climber )



CLT - 17 ( Pull Up Bar )



CLT - 06 ( Maze Climber )



**KD - 01 ( Spring Rider Duck )**



**KD - 03 ( Spring Rider Horse )**



**KD - 02 ( Spring Rider Elephant )**



**KD - 04 ( Spring Rider Fish )**



**KD - 05 ( Rocking Boat )**  
[www. playglobal.in](http://www.playglobal.in)



**KD - 11 ( X & O )**

**KIDS RANGE**

**KIDS RANGE & BINS**



**KD - 07 ( Kids Combination Set )**



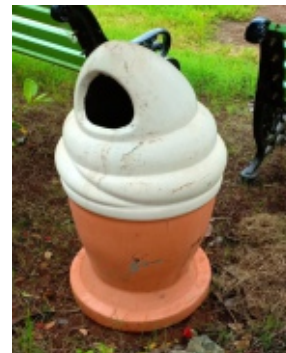
**KD - 09 ( Kids Mini Slide )**



**DB - 12 ( Dolphin )**



**DB - 13 ( Whale )**



**DB - 14 ( Ice Cream )**



**DB - 15 ( Fish )**



**BD - 01 ( Economy Bench )**



**BD - 08 ( Cast Iron Economy )**



**BD - 10 ( Premium FRP Bench )**



**BD - 07 ( Cast Iron VIP Bench )**



**BD - 12 ( Picnic Table )**



**BD - 04 ( Deluxe Bench )**

[www. playglobal.in](http://www.playglobal.in)

**OPEN GYM**



**OG - 01 ( Sky Walker )**



**OG - 04 ( Chest Press/ Shoulder Press )**



**OG - 08 ( Double Stepper )**



**OG - 10 ( Double Pendulum )**



**OG - 15 ( Rowing )**



**OG - 07 ( Stepper )**

[www. playglobal.in](http://www.playglobal.in)



**OG - 31 ( Pull Up Station )**



**OG - 27 ( Twister / Walker / Leg Press )**



**OG - 21 ( FRP AB Board )**



**OG - 29 ( Cycle )**



## Manufacturers of Play Ground Equipments, Open Gym Equipmen

Unit No 8, Rajshree Industrial Estate, Behind Vineeth Chemical, Agarwal Udhyog Nagar, Sativali, Vasai East. 401 208

✉ [playglobal.in@gmail.com](mailto:playglobal.in@gmail.com) 🌐 [www.playglobal.in](http://www.playglobal.in)

☎ +91 92722 94908